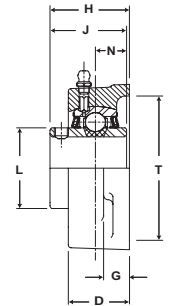
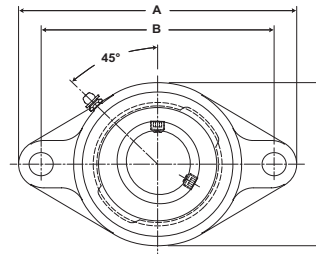




- Duty:** Standard
- Rolling Elements:** Ball
- Housing:** Cast Iron Two Bolt Flange
- Self Alignment:** +/- 2 Degrees
- Lock:** Setscrew
- Seal:** Felt
- Optional Seal:** Contact
- Temperature:** -20° to 220°F



SFT Series Standard Duty Two-Bolt Flange Units - Setscrew Locking

BORE DIAMETER		PART No.	BEARING INSERT No.	BASIC DYNAMIC RATING lb/N	DIMENSIONS inch / mm										BOLT SIZE	UNIT Wt. lb/kg	
inch	mm				A	B	C	D	G	H	J	N	L	T CORE			
1/2		SFT-8	2-08														
9/16		SFT-9	2-09	2611	3 7/8	3	2 5/16	59/64	7/16	1 9/32	1 7/32	1/2	1 3/16	2	3/8	1.2	
5/8		SFT-10	2-010	11614	98.4	76.2	58.7	23.4	11.1	32.5	31.0	12.7	30.2	50.8		.54	
11/16		SFT-11	2-011														
3/4		SFT-12	2-012	2611	4 13/32	3 17/32	2 3/8	59/64	7/16	1 9/32	1 7/32	1/2	1 3/16	2	3/8	1.2	
	20	SFT-204	5204	11614	111.9	89.7	60.3	23.4	11.1	32.5	31.0	12.7	30.2	50.8		.54	
13/16		SFT-13	2-013														
7/8		SFT-14	2-014														
15/16		SFT-15	2-015	2801	4 7/8	3 57/64	2 3/4	1 1/32	17/32	1 7/16	1 3/8	9/16	1 3/8	2 3/8	7/16	1.6	
1		SFT-16	2-1	12459	123.8	98.8	69.9	26.2	13.5	36.5	34.9	14.3	34.9	60.3		.73	
	25	SFT-205	5205														
1 1/16		SFT-17	2-11														
1 1/8		SFT-18	2-12														
1 3/16		SFT-19	2-13	4381	5 9/16	4 19/32	3 1/4	1 11/64	17/32	1 9/16	1 1/2	5/8	1 19/32	2 7/8	7/16	2.2	
1 1/4		SFT-20R	1-14	19487	141.3	116.7	82.6	29.8	13.5	39.7	38.1	15.9	40.5	73.0		1.00	
	30	SFT-206	5206														
1 1/4		SFT-20	2-14														
1 5/16		SFT-21	2-15														
1 3/8		SFT-22	2-16	5782	6 1/8	5 1/8	3 3/4	1 11/32	9/16	1 3/4	1 11/16	11/16	1 55/64	3 5/16	1/2	3.2	
1 7/16		SFT-23	2-17	25718	155.6	130.2	95.3	34.1	14.3	44.5	42.9	17.5	47.2	84.1		1.45	
	35	SFT-207	5207														
1 1/2		SFT-24	2-18														
1 9/16		SFT-25	2-19	7340	6 3/4	5 21/32	4 1/8	1 1/2	9/16	2 1/64	1 15/16	3/4	2 1/16	3 1/2	1/2	4.5	
	40	SFT-208	5208	32648	171.5	143.7	104.8	38.1	14.3	51.2	49.2	19.1	52.4	88.9		2.04	
1 5/8		SFT-26	2-110														
1 11/16		SFT-27	2-111	7901	7 1/16	5 27/32	4 3/8	1 9/16	9/16	2 3/64	1 15/16	3/4	2 19/64	3 7/8	9/16	5	
1 3/4		SFT-28	2-112	35144	179.4	148.4	111.1	39.7	14.3	52.0	49.2	19.1	58.3	98.4		2.27	
	45	SFT-209	5209														
1 13/16		SFT-29	2-113														
1 7/8		SFT-30	2-114														
1 15/16		SFT-31	2-115	7889	7 7/16	6 3/16	4 9/16	1 9/16	9/16	2 5/32	2 1/32	3/4	2 15/32	4	9/16	5.4	
2		SFT-32R	1-2	35090	188.9	157.2	115.9	39.7	14.3	54.8	51.6	19.1	62.7	101.6		2.45	
	50	SFT-210	5210														
2		SFT-32	2-2														
2 1/8		SFT-34	2-22	9752	8 1/2	7 1/4	5 1/4	1 3/4	13/16	2 5/16	2 3/16	7/8	2 23/32	4 1/4	5/8	8.4	
2 3/16		SFT-35	2-23	43377	215.9	184.2	133.4	44.5	20.6	58.7	55.6	22.2	69.1	108.0		3.81	
	55	SFT-211	5211														

For Standard Duty Bearing Inserts-Single Lock see page G-92.

Metric dimensions for reference only.

Not all parts are available from stock. Please contact customer service for availability (800) 626-2120.

For more information on bearing capabilities outside of our standard offering, please contact Application Engineering (800) 626-2093.